

**Technical Facilities Specifications
 Erling B. and Dorothy E. Hanson Auditorium
 West Delaware High School**

Contents:

Contact Information	2
House Capacity	3
Loading Dock.....	3
Stage Dimensions.....	3
Stage Floor	3
Orchestra Pit.....	3
Orchestra Shell.....	4
Rigging Linesets	4
Rigging Cable Picks.....	4
Grid/FOH	5
Power	5
Softgoods/Masking	5
Lighting Control.....	6
Dimmers/Circuits	6
Fixture Inventory	7
Follow Spots	7
Audio Consoles.....	8
Audio Snake.....	8
House Speaker Cluster	8
Audio Signal Processing	8
Audio Monitor System.....	9
Microphone Inventory	9
Hearing Impaired	9
Intercom	10
Video Screen and Projector	10
Video Playback and Monitoring	10
Video Recording	10
Pianos.....	11
Orchestra and Choral Risers/Chairs.....	11
Green Room.....	11
Makeup Room.....	11
Dressing Rooms	11
Choir and Band Rooms.....	11
Set Construction.....	11
Box Office/Ticketing	12
CAD Files	12
Line Set Schedule	13
Circuit Schedule.....	14
Diagram: House and Stage.....	15
Diagram: Set Construction, Makeup, Green, and Dressing Rooms	16
Diagram: Auditorium Section Cut Away	17
Photos.....	18-19

Contact Information

Address:

West Delaware High School
701 New Street
Manchester, IA 52057

Phone:

563-927-3515

Fax:

563-927-2785

Personnel Contacts:

Technical Director/Manager

Caleb Schultz

(319) 360-1931

E-mail: me@calebschultz.com

Director of Building and Grounds:

Ron Swartz

(563) 927-3515 ext. 410 office

(563) 927-2785 fax

E-mail: ronswartz@w-delaware.k12.ia.us

Director of Choral Activities:

Duane Philgreen

(563) 927-3515 ext. 337 office

E-mail: duanephilgreen@w-delaware.k12.ia.us

House Capacity

The seating capacity of the house is 688.

Loading Dock

One dock is available, at ground level, on north side of the building off Prospect Street. The door opening is 9' w X 12' 3" h. The dock accesses the interior of the set construction room, which is off stage right. Directly through the set construction room is access to the stage through another garage door this door is, 9' w X 16' 3" h.

Stage

Dimensions:

Proscenium opening 48' 4" w X 20' 6" h.

Stage depth, plaster line to upstage wall: 35'

There is a 20" w crossover upstage of the last full black to the upstage wall.

Apron depth, plaster line to apron front, at center: 7'

Apron depth, pit filler installed at stage level, at center, to plaster line: 15'

Stage width from stage right wall to stage left wall: 90' 4"

Center Line to wall, SL: 41' (38' to locking rail) ; Center Line to wall, SR: 49'

Stage Floor:

Tongue-in-groove maple, painted black, on top of plywood subfloor, on top of sleepers, on top of 3/8" rubber resilient pads, on top of foam board, on top of concrete. The full stage floor is approximately 6" deep.

Orchestra Pit:

The orchestra pit, is 8' deep, with an 8' opening from in the center from the apron to the wall of the pit in the audience.

There is a custom built pit filler by SECOA which can be installed or removed depending on staging needs. The surface of the pit filler is the same as the stage. Please contact the Technical Director for more information as the filler is labor intensive to install or remove and must be done prior to an event.

There is stair access to the pit off stage right in the tower room.

There is 8,000lb freight lift located in the middle of the pit, which can be used to lower equipment (not personnel) into the pit from the stage deck.

Orchestra Shell:

There is a Wenger Diva shell available for use, the shell has 3 ceiling panels with installed lighting, along with 9 towers which can be set in various configurations to allow for different stage dimensions. When the shell is installed, only the main curtain and the main valence can be flown.

Maximum stage dimensions with the orchestra shell fully installed are:

24' 8" from plaster line to upstage wall of shell towers.

38' upstage left to upstage right.

50' (proscenium opening) downstage left to downstage right.

The towers have various built in doors which will allow equipment and performers to the stage.

Please contact the Technical Director if the shell will be needed.

Rigging**Linesets:**

26 total single purchase linesets are available for use. Some of these are dedicated linesets and cannot be used for anything else.

18 Un-dedicated, 63' X 1 1/2" Schedule 80, 7 pick-up points, 1,200 Lbs capacity.

See Lineset Schedule for placement.

There is approximately 25,000 lbs of counterweight available for the undedicated linesets.

There is a total of 32,696 lbs of counterweight.

Arbors are loaded on a loading gallery approximately 38' from the stage deck.

The single purchase fly is equipped with an arbor pit, which allows for the batten to achieve full flight.

Maximum Batten Travel: 41' 6"

All electrics have limited flight and cannot be used for full drops.

All lines are trimmed to 4' off the stage floor except, lineset 26, low trim is 10' 8" from deck.

Please note: Linesets 7, 13, and 19 are large orchestral ceilings with light fixtures attached to them. Please contact the Technical Director for more information about possible rigging off these lines.

Cable Picks:

There are 8 pick points, four on each side of the stage. On stage right the pick points can be secured to 4 steel cleats bolted to the wall. On stage left, the pick points can be secured to the rail on the loading gallery. Picks can support approx 300 lbs.

Grid:

The stage does not have a grid deck to rig from above the stage. There are various rigging points rope picks located on the stage, please contact the Technical Director for more information.

FOH:

There are various beams down stage of the proscenium opening for chain hoist points or other rigging needs. There are various acoustical clouds located in the house, rigging must be hung between the clouds. Please contact the Technical Director for more information.

Power

One Company Switch is located on the upstage right wall. The Company Switch is 200 amp, 120/208 volt, 3 phase, 4-wire plus ground. The switch has sequential posi-lock connectors, with internal lugs available for tie-ins.

Additional power is available at the main disconnect located in a mechanical room above the set construction room, approx 100ft from the stage. Additional power is 120/208/480 volt, 3 phase. Please contact the Technical Director if additional power is required.

Soft Goods**Main Curtain:**

Is undedicated but typically hung on lineset #2, guillotine or travel, it cannot be paged.

The main curtain and valance are velour, 50% fullness, color plum red.

The main curtain is made of two panels measuring: 32' 6" w X 21' h

The main valance is undedicated but is typically hung on lineset #1, measuring: 62' X w 10' h

Masking:

Legs: 3 pair @ 18' w X 21' h

Borders: 5 @ 62' w X 8' h

Full black: 2 sets w/traveler track (mid stage is typically used as 3rd set of legs if not being used for mid-black)

Includes 2 panels @ 32' 6" w X 21' h

All masking is black velour, 50% fullness.

Cyclorama:

Muslin, vertical seamed (not visible), 62' w X 21' h

Scrims:

None available in house. Various rental options are available from other local venues.

Lighting

REP Plot is available upon request, please contact the Technical Director for more information.

Control:

ETC Expression3/800, software version 3.11.

The console can be operated from the control booth at the rear of the house, at the audience sound board location, or stage right. There is a wireless Remote Focus Unit. The console has two 17 lcd monitors to be used with operation. There are two DMX universes run throughout the venue, various connections to these universes are available in many areas. There is an ETC Net2 DMX Gateway which allows the conversion of DMX values from either universe to the Ethernet network.

ETC Remote Video Note can be connected to the ETC Ethernet network and used in conjunction with the Expression3. Network connections are available on stage left and right, mix pit, loading gallery, both catwalks, mix pit and control booth.

Two ETC Net2 DMX nodes can be configured for either universe of DMX. Each node has two DMX ports, preconfigured as DMX universe one and two output.

Architectural Control:

ETC Unison control system is installed and configured for house and work control. The system has panels located throughout the house and stage which allows control of various circuits. Main control panels are located in the control booth and on stage right. These panels have 8 snapshots which can be recorded and recalled using these panels. Snapshots will record any DMX value running through channels 1-512. All entry panels can be disabled or secured to prevent operation during performance.

Dimmers:

ETC Sensor, dimmer-per-circuit

192 @ 2.4kw undedicated stage circuits

Additional Unison dimmers are installed for house and works. Which can be controlled through house DMX universe one.

Circuits:

FOH:

Follow Spot (above rear vestibules): 2 @ 2.4kw (duplicated on both spot platforms)

Far Catwalk: 25 @ 2.4kw

Near Catwalk: 26 @ 2.4kw

Box Booms: 8/side @ 2.4kw

On Stage:

#1 Electric (Lineset # 3): 24 @ 2.4kw

#2 Electric (Lineset # 8): 21 @ 2.4kw

#3 Electric (Lineset # 12): 20 @ 2.4kw

#4 Electric (Lineset # 17): 21 @ 2.4kw

#5 Electric (Lineset # 22): 20 @ 2.4kw

Downstage Left: 4 @ 2.4kw (duplicated in Pit Left)
Downstage Right: 4 @ 2.4kw (duplicated in Pit Right)
Upstage Left: 6 @ 2.4kw (duplicated on Loading Gallery)
Upstage Right: 6 @ 2.4kw (duplicated on Loading Gallery)
Orchestra Pit: 8 @ 2.4kw (duplicated DSL and DSR)
Loading Gallery: 12 @ 2.4kw (duplicated USL and USR)

Refer to Circuit Schedule for additional information.

Lighting Inventory:

Lighting Units

- 16 ETC Source Four 19°
- 30 ETC Source Four 26°
- 40 ETC Source Four 36°
- 8 ETC Source Four 50°
- 30 ETC Source Four Par
- 26 6" Fresnel w/ 500w lamps
- 8 6" Fresnel w/ 1kw lamps
- 8 3-cell Lee Sky Cyc with 500w lamps
- 2 Strand 6x9 (40°) with 1kw lamps
- 8 Single cell Cyc with 500w lamps
- 8 Works with 500w lamps
- 14 Zoom Ellipsoidal with 1kw lamps typically focused as general stage lighting

Notes:

All dimmed circuits and fixtures are 2P+G (stage-pin)

All ETC Source Four units are lamped at 575w

All ETC Source Four Par fixtures have replaceable lenses, including: Wide (WFL), Medium (MFL), Narrow (NSL), Very Narrow (VNSP).

Floor bases are available for four of the 3 cell Cyc fixtures.

Various stage-pin extension cable is available in lengths of 5', 10', 25, 50', and 100'.

Various length of DMX and Ethernet cables are available.

Various cut and uncut Gel is available, please contact the Technical Director for specific color requirements.

Lighting Accessories

- 1 Iris for Source Four Ellipsoidal
- 20 "B" size Template (gobo) Holders for Source Four Ellipsoidal
- 4 Boom Base-50 lb.
- 4 16ft boom pipes
- 36 18" Side Arms
- 36 Top Hats for Source Four Ellipsoidal
- 10 6" Donut for Source Four Ellipsoidal
- 20 Molded stage-pin twofers

Follow Spots:

- 2 Lycian, 1209 MidgetHP w/ HMI575 w lamp.

Audio

Consoles:

Allen and Heath ML3000 40 channel (8 VCAs)
Carvin 32 channel (No VCAs)

The console is located in the mix pit at ground level, at approximately 40' from the plaster line. The mix pit is 12' 5" W x 11' 7" D, and depressed 24" in the ground, therefore the operator can stand at the console and be at a seated audience level.

The facility is equipped with a Allen and Heath iDR control system. This system allows for independent and easy control of the built in wireless microphones, along with various inputs such as a computer input (1/8 inch stereo), DVD/CD Player, and four XLR inputs with +48v.

The iDR system is controlled on stage right in the audio control panel, this system is designed for ease of use and to be used without the need for the above consoles. If stage monitors are needed, the iDR system can utilize the stage monitors on the 1st Electric.

Snake:

There are 40 hard-wired snake channels which run from mix pit to a patch bay located off stage left. Stage inputs are listed below and can be manually patched at the patch bay to any snake channel running to the mix pit. All patches in the house are 3pin XLR.

Stage patch locations, number of channels:

- 8 Downstage Left
- 8 Downstage Right
- 6 Upstage Center
- 2 Pit Stage Left
- 2 Pit Stage Right
- 8 Pit Center
- 4 Far Catwalk
- 14 Loading Gallery

House Speaker system:

Center Cluster: 3 EAW MQM1364 facing L C R. EAW MQM 1215 mid/bass facing C.
Front Fill: 3 EAW UB42 dispersed LCR
Delays: 3 EAW MK2394 dispersed LCR
Sub-bass: 2 EAW S625Z flown left and right
House system is MONO

Signal Processing:

1 DBX 166XL Compressor Limiter/Gate
4 Crest CPQ 2131P 31 band Equalizers (pre-configured for Monitor sends 1-4)
1 Lexicon MX400 effects processor

Playback: 1/8" mini plug feeding stereo input for various CD/iPod at: FOH, stage right, and front of apron. CD/DVD player is available on stage right.

Stage Monitor System:

Monitor Wedges:

2 EAW SM200iH (129Z)

2 Yamaha SM122

2 EAW MK2394 Permanent OH Stage monitor

Stage monitor patches are located with monitor channels:

Pit Left: 1-4

Pit Right: 1-4

Pit Center: 5

Upstage Center: 1-4

Loading Gallery: 5, iDR

Additional Speakers:

2 Yamaha 15" Full Range Cabinets

Additional Full Range and Sub-bass Cabinets may be available upon request, please contact the Technical Director for more information.

Microphones and accessories:

Built in Sennheiser UHF wireless system:

1 Sennheiser G2 wireless lavalier

1 Sennheiser ew500 G2 wireless handheld

Additional Sennheiser wireless rack (may be available upon request):

9 ew100 G1 receivers

2 ew100 G2 receivers

11 sk500 wireless lavalier microphones

5 ew500 G1 and G2 wireless handheld microphones

3 Neumann KM184

5 Shure SM58

multiple direct boxes

A stereo matched pair of Shure KSM137 microphones are hung in the middle of the house in an XY configuration used for audio monitoring (Clear-Com system) and recording.

Stands: 7 On Stage Tripod MS7701 B-VL Euro Boom available upon request.

Hearing Impaired:

The facility is equipped with a RF hearing impaired system with 4 available mono receivers for monitoring.

Intercom:

Clear-Com, 2 channel system (channel 1 is utilized for paging system which feeds dressing rooms, green room, makeup, choir and band room)

MS232 Main Station in Control room

8 RS-601 single channel belt packs

4 RS-501 single channel belt packs

8 Beyer DT-108 headsets (single muff)

4 Clear-Com headsets (single muff)

6 CC KB-212-PL Pro speaker stations (permanently installed in both dressing rooms, makeup, green room, choir and band rooms.)

1 CC KB-112 Portable Single Channel Speaker station

An additional two channel Clear-Com base station is available upon request.

All Clear-Com packs operate through two wire plus ground XLR connection. These can be connection through the snakes or intercom loop. Clear-Com patches are available: DSR, DSL (locking rail), Mix Pit, House Left, House Right, Control booth, and Spot Platforms.

Video**Screen:**

A permanently hung video screen is located downstage of the plaster line before the start of the first acoustical cloud. The screen is not visible to the audience when it is in storage. The screen is controlled downstage right in the audio control console.

The screen is 12' w X 9' h and trim is 3.5' from the stage floor.

Projector:

EIKI LC-X71 with a long throw lens, is installed in the control booth. It can be controlled remotely with an infrared remote or downstage right in the audio control console.

Playback:

A DVD Player is installed and configured for playback, it can be controlled in the downstage right audio rack or from the apron with an infrared remote through a wireless repeater.

A computer/VGA input is available in the center of the pit. There is a 1/8 stereo audio input for the VGA computer input.

Video Monitoring:

8 19" Wide-Screen LCD TV's are available for video monitoring. These can be fed with a built-in Infrared Video Camera mounted in the control booth. Or reconfigured for DVD playback, Computer input, TV Cable Channels, or an input from the video mixer. These are typically mounted: DSL, DSR, Pit, Green Room, Men's and Women's Dressing rooms, Band and Choir rooms, and Orchestra Pit.

Recording:

Video cameras, intercom, and a Videonics video mixer is available for use.

Additional Items

Pianos:

Boston GP-218 7'2" Grand
Yamaha UM1 Upright

Orchestral/Choral:

60 Wenger Musician Chairs
60 Wenger Roughneck Stands
20 Music Stand Lights
1 Conductors Double Podium
1 Conductors Music Stand

Risers/Platforms:

16, 4' X 8' Stage Right decks that can be set at varying heights of 8" (4), 16" (4), 24" (4), and 32" (4).

Additional Wenger Versalite decks may be available upon request.

7, 4-step Wenger Signature Choral Risers

Green Room:

All rooms are uncarpeted tile floor.

The green room is accessible directly from the tower room off stage right. The room is open to the makeup room. The room has a sink, refrigerator and microwave and can be furnished with furniture if needed. Please contact the Technical Director for more information. Three green room has a tile floor.

Makeup Room:

The makeup room has multiple counters and rows of mirror with stools available for makeup. The room is located off the back hall and has a sink.

Dressing Rooms

Two (typically designated men's and women's) dressing rooms located at stage level, in the back hallway, across from the choir and band rooms. Each can accommodate 25 performers, and have attached restroom facilities. All are accessible to people with disabilities.

Choir and Band Rooms

Located in the back hallway, across from the dressing rooms.

Each can accommodate 100 performers, both have pianos available for warm-up and rehearsal.

Both are accessible to people with disabilities.

Set Construction/Loading Dock:

Located off stage right. Has access to the makeup room, and is the typical route from the makeup room to the stage.

Box Office/Ticketing:

The facility utilizes an in house computerized ticketing system for all school related events. Please contact the technical director if ticketing will be needed.

LED Apron Light:

There is a built in blue LED strip light at the edge of the apron, which can be used when the pit filler has been removed. The light can be dimmed on stage right.

Diagrams / CAD Drawings:

DWG Files of the facility and REP plot are available upon request.

Lineset Schedule

Set Number	Distance From PL	Number of Picks	Batten Length	Remarks
1	0'-8"	7	63'	Front Valance
2	1'-4"	7	63'	Front Traveler
3	2'-8"	8	63'	Electric #1
SR and SL Picks				
4	4'-0"	7	63'	General Purpose
5	4'-8"	7	63'	Border #1
6	6'-0"	7	63'	Legs #1
7	6'-8"	8	63'	Orchestra Shell Ceiling #1
8	8'-1"	8	63'	Electric #2
SR and SL Picks				
9	9'-4"	7	63'	Border #2
10	10'-0"	7	63'	Legs #2
11	11'-4"	7	63'	General Purpose
12	12'-8"	8	63'	Electric #3
SR and SL Picks				
13	14'-0"	8	63'	Orchestra Shell Ceiling #2
14	15'-4"	7	63'	Border #3
15	16'-0"	7	63'	Midstage Traveler
16	17'-4"	7	63'	General Purpose
17	19'-4"	8	63'	Electric #4
SR and SL Picks				
18	20'-8"	7	63'	General Purpose
19	22'-0"	8	63'	Orchestra Shell Ceiling #3
20	23'-4"	7	63'	Border #4
21	24'-0"	7	63'	Legs #3
22	26'-0"	8	63'	Electric #5
23	29'-4"	7	63'	Backdrop - CYC
24	30'-0"	7	63'	Border #5
25	30'-8"	7	63'	Upstage Traveler
26	32'-0"	7	63'	General Purpose - Reduced Travel

Circuit Schedule

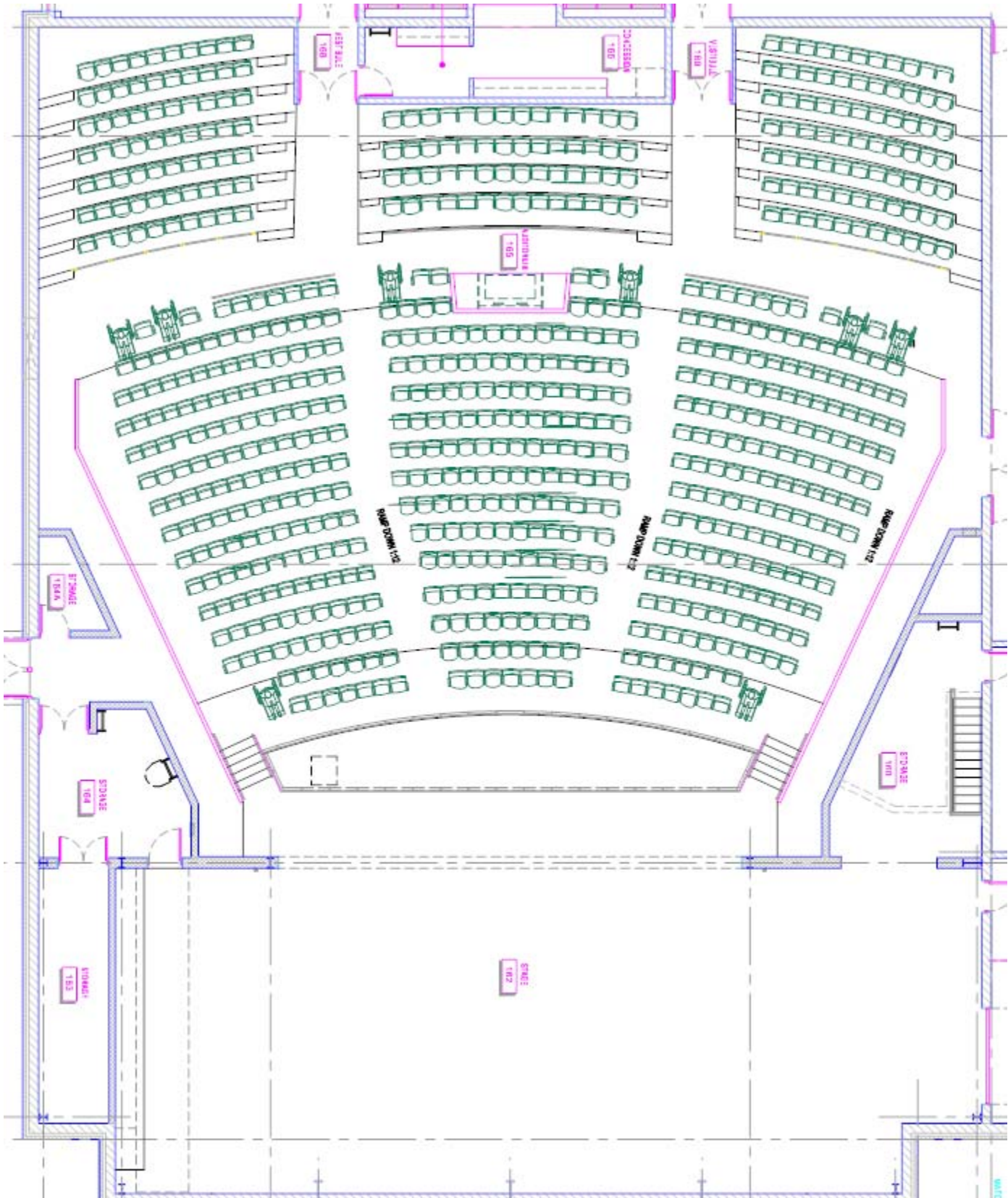
Location	Circuit Quantity	Circuit Numbers (from-to)	Remarks
Downstage Left	4	1-4	Circuits repeat in orchestra pit
Downstage Right	4	5-8	Circuits repeat in orchestra pit
Upstage Left	6	9-14	Circuits repeat at loading gallery
Upstage Right	6	15-20	Circuits repeat at loading gallery
SL Orchestra Pit	4	1-4	Circuits repeat on stage
SR Orchestra Pit	4	5-8	Circuits repeat on stage
Follow Spot HR	2	21-22	Circuits repeat house left
Follow Spot HL	2	21-22	Circuits repeat house right
Loading Gallery	12	9-20	Circuits repeat on stage
#1 Electric	24	23-46	
#2 Electric	23	47-66	Includes (3) circuit 193 for work lights
#3 Electric	20	67-86	
#4 Electric	21	87-106	Includes (3) circuit 194 for work lights
#5 Electric	20	107-126	
Near Catwalk	25	127-150	Includes (3) circuit 195 for work lights
Far Catwalk	26	151-176	
Box Boom SL	8	177-184	
Box Boom SR	8	185-192	

Stage Work Light Circuits: 193-195

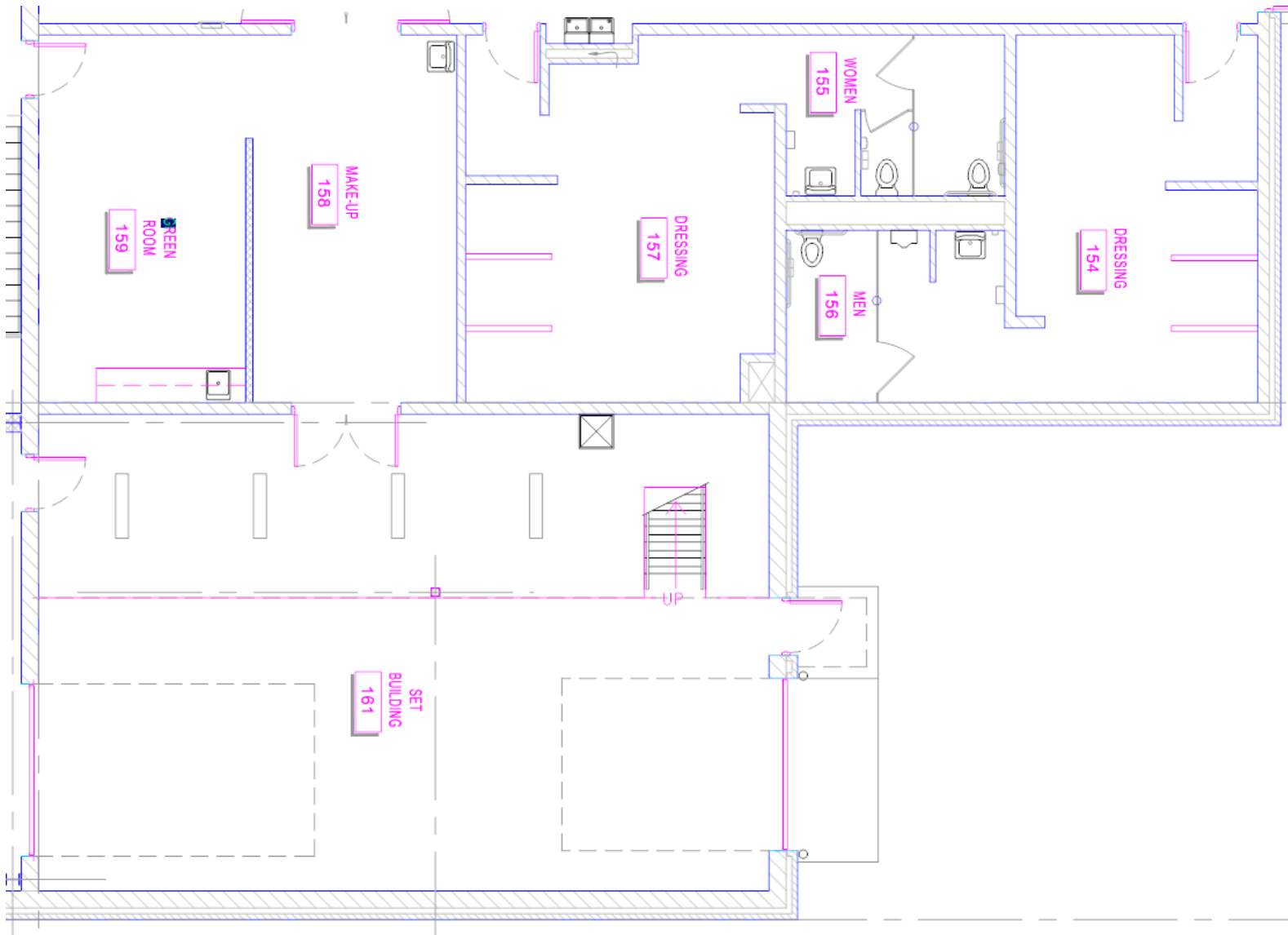
Work Lights Circuits: 196-204

House Light Circuits: 205-216

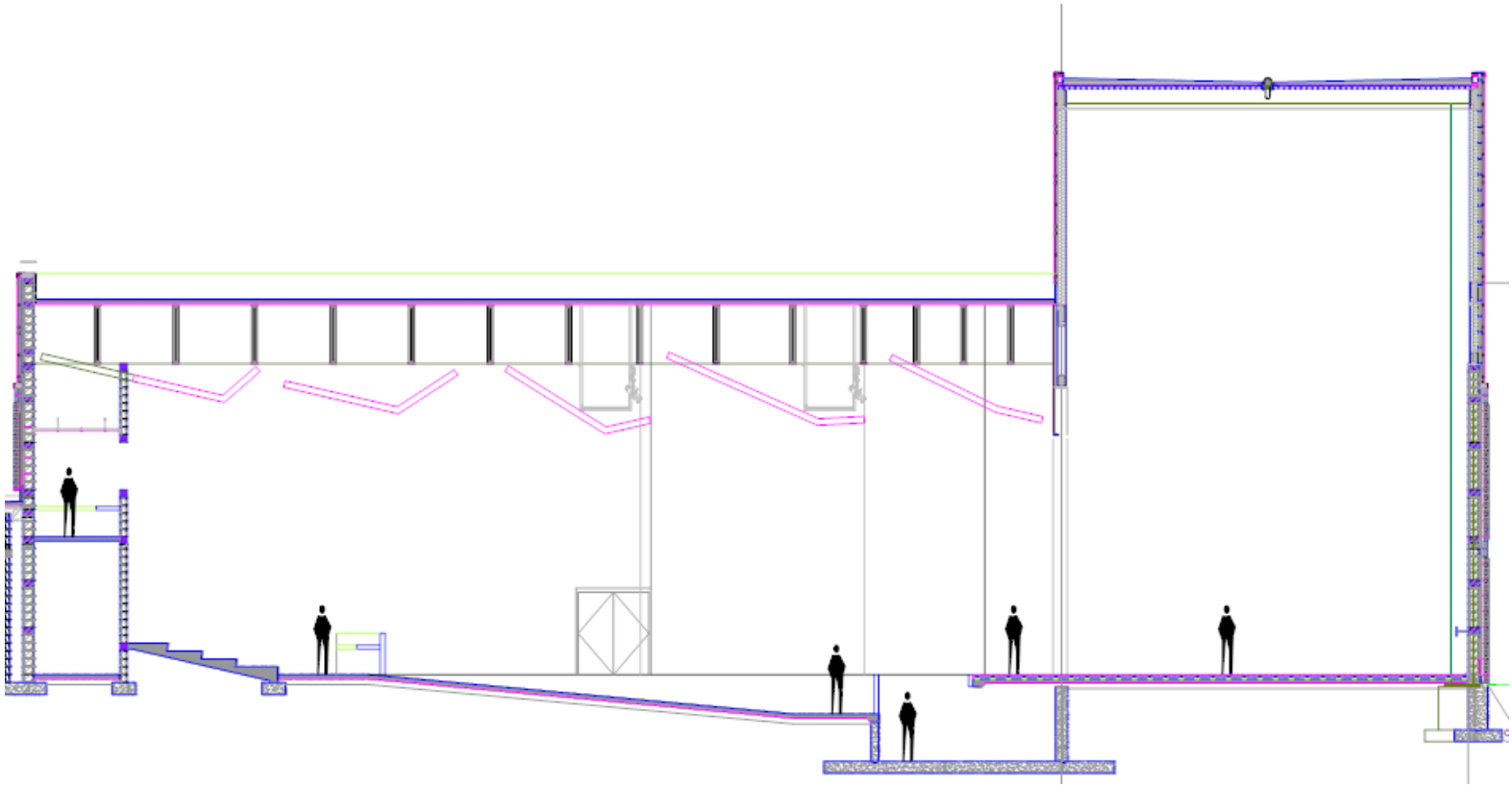
House and Stage:



Set Construction, Green Room, Makeup and Dressing Rooms:



Stage section cut away:



House from Down Stage Right



House from Stage



Stage with Orchestra Shell and Grand Piano from mid-center of house



View of Stage from Stage Right

